

Power Apparel And More For Law Enforcement, Military And Public Safety Professionals.



Catalog Supplement
Spring, 2009



For The **Tru** Professional

www.truspec.com

Light Duty. Heavy Duty. Off Duty.



TRU-SPEC®
24-7
SERIES

READY WHEN YOU ARE.



From a surveillance detail to a desk assignment to a night on the town, today's active cops want their apparel to be ready for anything, from extreme to casual.

The 24-7 Series by TRU-SPEC® is designed and built for unequalled comfort, exceptional fit and amazing versatility. And, each and every item of apparel in the growing 24-7 line is styled for crisp, contemporary good looks.

In traditional cotton or in state-of-the-art blends, every piece of 24-7 clothing is designed to easily cross the line between duty and casual wear. 24-7 pants, polos, uniform shirts, vests and jumpsuits are the real deal for any cop (or non-cop) who's passionate about comfort and full function, and for anyone who's serious about getting the most out of his (or her) on-duty and off-duty hours, without changing clothes repeatedly.



TRU-SPEC
BY ATLANCO

For The **Tru** Professional

24-7 Series In Polyester Cotton Rip-Stop



TRU-SPEC®
24-7
SERIES
READY WHEN YOU ARE.

Looking for duty apparel that's functional, comfortable and tough enough to match your active lifestyle both on duty and after hours? Nothing fits your needs as well as the easy care rip-stop garments in **TRU-SPEC'S** 24-7 Series.

This exciting collection began with our lightweight, all season 24-7 rip-stop pants.

The pants have been so popular, we have also added several new complimentary garments with unique features that make these multi-purpose items a joy to wear any time, any place. Every piece of apparel is manufactured from 6.5 oz. 65/35 polyester cotton rip-stop and Teflon® coated, and each includes big, secure pockets of our own exclusive design – and lots of them – for carrying virtually anything you need to carry.

The perfect choice for your active lifestyle? The 24-7 Series in rip-stop is

Ready When You Are.



For The **Tru** Professional

24-7 Series Rip-Stop Pants Always Ready.



Lighter Weight, But Still Authentic 24-7's.

Just like **TRU-SPEC'S** original 24-7 cotton pants, our lighter weight rip-stop pants are built for unequalled comfort, exceptional fit and amazing versatility. And they're styled with crisp, contemporary good looks. For someone who lives or works in a warm climate or someplace where the summer months can present a serious uniform challenge...or for anyone who just appreciates true all weather comfort...these ultra-versatile 24-7 rip-stop pants are the logical choice. Because they're manufactured from cool, lightweight 6.5 oz. 65/35 polyester cotton rip-stop, these new 24-7 pants offer a real all season, easy care alternative to our 24-7 cotton pants and they're every bit as versatile as the originals, as well.

TRU-SPEC'S exclusive 24-7 rip-stop pants are loosely based on the tactical uniform trousers preferred by many SWAT officers and other special operators – complete with ample storage for a myriad of professional and personal gear. The remarkable fit, comfort and striking good looks help take these pants into completely new territory where no single-function tactical pants have ever ventured.

Whether you work for a small department whose officers could jump from traffic duty to an investigation to busting a crack house, all in the course of one day...or if your unit within a bigger department is looking for a practical uniform option somewhere in-between a Class C and a BDU, these amazing multi-function pants are your answer.



1060



For The **Tru** Professional

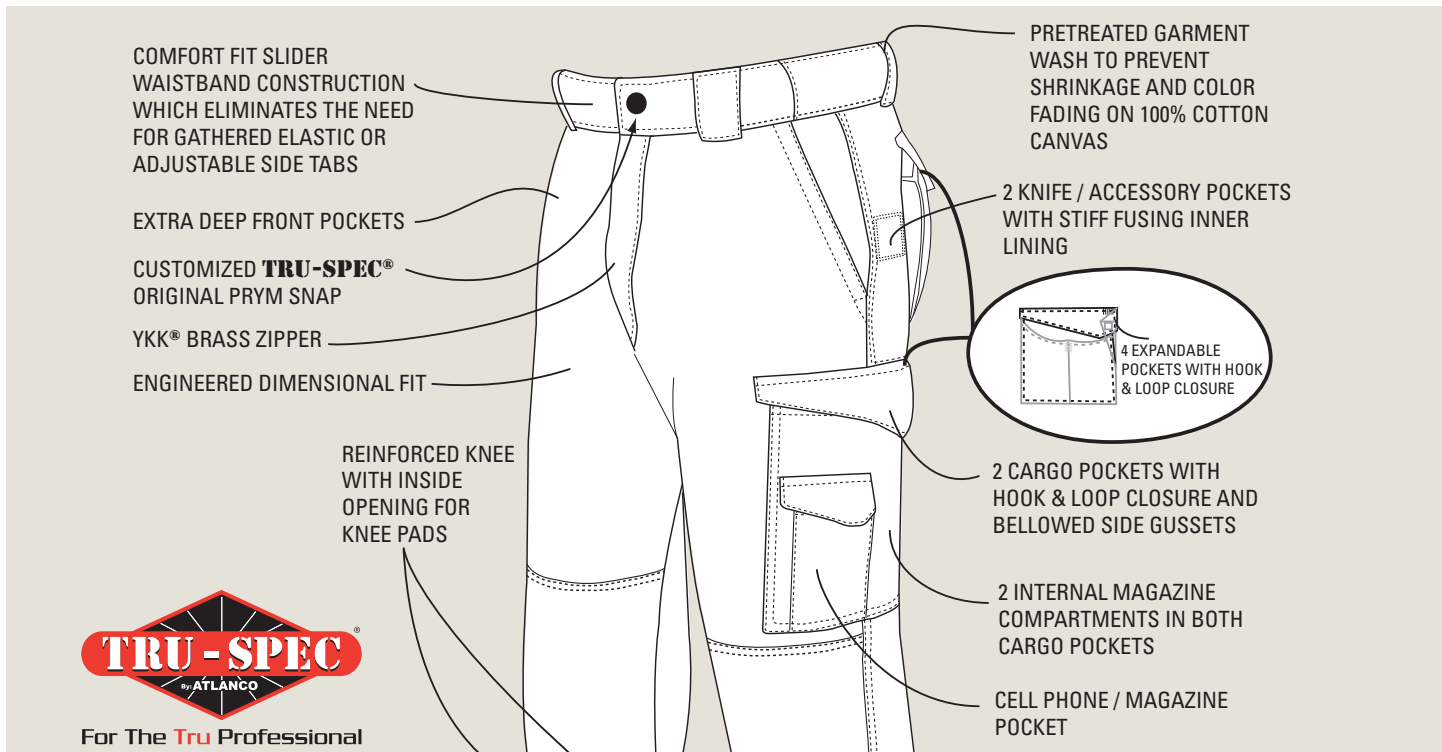


24-7 Series Pants Always Ready.



Features include:

- Rip-stop pants constructed from Teflon® coated 6.5 oz. polyester cotton ripstop; Original 24-7 pants constructed from 8.5 oz. pre-treated washed cotton canvas.
- Self-adjusting slider waistband for all-day comfort. Also accommodates either paddle style or inside-the-pant holster.
- Unique pocket design allows for casual appearance while providing secure storage for all duty requirements.

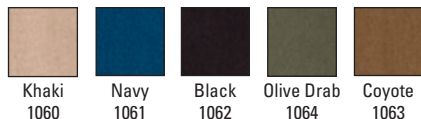


For The **Tru** Professional

8.5 oz. 100% cotton canvas available in these colors:



6.5 oz. 65/35 polyester cotton rip-stop, Teflon® coated, available in these colors:



Original Cotton 24-7 Pants

For maximum wear-ability virtually around the clock, the original 24-7 trousers are manufactured from pre-washed 100% cotton canvas to guarantee a constantly clean, neat appearance and day-long comfort, even on demanding double-shifts, as well as to ensure against shrinking and color fading. The pants were designed with what **TRU-SPEC**® calls an "Engineered Dimensional Fit". That simply means that the length of the rise increases in proportion to the length of the inseam. Like our 24-7 rip-stop pants, our original cotton pants include all the pockets an officer is likely to need, either on or off duty.

Available in several full range of standard and hard-to-find sizes:

Waist 28" - 44" with 30", 32" or 34" inseam
Waist 28" - 54" with unhemmed length of 37"



Ladies' 8.5 oz. 100% cotton canvas available in Khaki only:



Sizes: 2 - 14

Ladies' 6.5 oz. 65/35 polyester cotton rip-stop, Teflon® coated, available in Khaki only:



Sizes: 2 - 14

New! 24-7 Rip-Stop Uniform Shirt



READY WHEN YOU ARE.

The Uniform Shirt Of The Twenty-First Century.

Whether they're worn tucked or untucked with matching 24-7 pants as contemporary uniform shirts...on a plainclothes or undercover assignment...or just as off-duty casual shirts...these full featured, super comfortable new duty shirts really have no limits.

Our new Rip-Stop Uniform Shirts, either long sleeve or short sleeve, are manufactured from the same lightweight, stain resistant, easy care 6.5 oz. 65/35 polyester cotton rip-stop material that has made **TRU-SPEC'S** 24-7 All-Season pants the hottest selling trousers in the law enforcement market. These duty shirts are designed for full function and built for unbelievable comfort and stylish good looks, and they include a host of signature 24-7 features that set them apart as the most distinctive and one-of-a-kind duty shirts on the market.



FEATURES

- Byron collar.
- Slightly curved hem can be worn tucked or untucked as duty or casual shirt.
- Bi-swing back, gusseted sleeves and articulated elbows for easy movement.
- Front zipper closure with storm flap.
- Signature 24-7 bellowed upper chest pockets and flaps with hook & loop closure; left pocket has pen stall, right pocket has mic/sunglass stall.
- Long sleeve version has inside sleeve strap for securely rolling cuffs.
- Colors to match or contrast with all 24-7 rip-stop pants.



For The **Tru** Professional

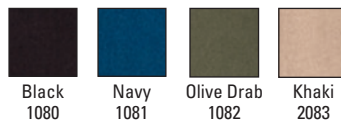
6.5 oz. 65/35 polyester cotton rip-stop, Teflon® coated, long sleeve shirt available in:



SIZES:

XSR – 4XLR, SL – 3XLL

6.5 oz 65/35 polyester cotton rip-stop, Teflon® coated, short sleeve shirt available in:



SIZES:

XSMALL – 4XL



New! 24-7 Rip-Stop Jumpsuit

TRU-SPEC®
24-7
SERIES

READY WHEN YOU ARE.



Ready For Action Anytime Because It's Always Right There, Self Contained In It's Own Compact Little Bag.

Call it a tactical jumpsuit or think of it as a full function coverall. One thing is for sure: it's more convenient and more versatile than any one-piece clothing system on the market. Like all 24-7 products, our 24-7 Rip-Stop Jumpsuit includes a host of special comfort features both top and bottom that make it a joy to wear either by itself or over a uniform or street clothes. It also includes thoughtfully designed pockets, fasteners and special compartments that hold virtually everything you'll need to carry either on the job or while working in your home workshop.

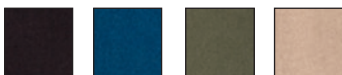
Best of all, the 24-7 Rip-Stop Jumpsuit folds to an ultra small size and stores in its own self contained bag which is actually part of the mesh inner lining! So it can be easily stored in the trunk of a patrol car and called to duty when a tactical or crowd control assignment presents itself...or in the glove box of your personal vehicle so you're prepared for emergencies. Because the 24-7 Rip-Stop Jumpsuit is manufactured from lightweight, easy care 65/35 polyester cotton rip-stop, it doesn't wrinkle, and the Teflon® coating keeps the fabric virtually stain-free.



FEATURES

- Mesh-lined internal zippered pocket doubles as a storage or carry bag.
- Mandarin collar with hook & loop.
- Bi-swing back.
- Articulated sleeves and gusseted underarms.
- Signature 24-7 bellowed upper chest pockets and flaps with hook and loop closure; left pocket has pen stall, right pocket has mic/sunglass stall.
- Signature 24-7 bellowed back pockets with hook & loop closure.
- Two signature 24-7 cargo pockets with hook & loop closure and bellowed side gussets.
- Two cell phone/magazine pockets.
- Two knife/accessory pockets with stiff, fusible interlining.
- Zippered hidden chest document pocket.
- #5 2-way front zipper closure.
- Reinforced knees.
- Hook & loop adjustable waist band, hook & loop closures on cuffs and ankles for snug fit.

6.5 oz. 65/35 polyester cotton rip-stop, Teflon® coated, available in:



Black 2690 Navy 2693 Olive Drab 2691 Khaki 2692

SIZES:

SMALL – 4XLR
MED – XL LONG



For The Tru Professional

New! 24-7 Rip-Stop Vest



The Lightweight, Full Function Cover-Up That's Ready Any Time, Any Place.

Every cop and private security officer needs a great vest for carrying and concealing all kinds of necessary tools of the trade. The 24-7 rip-stop Vest is as functional and thoughtfully designed as any you'll find whether you're a cop on a plain clothes assignment, a crime lab technician, a security specialist on a VIP protection detail, an amateur photographer or an outdoorsman. The lightweight, easy-care fabric makes it comfortable year-round for use on the job or while on a personal getaway.



FEATURES

- Mandarin collar.
- Zipper front closure with storm flap and snap closure.
- Two mesh lined chest document pockets with hidden zipper closures.
- Upper left chest has a hidden zipper welt pocket.
- Signature 24-7 bellowed and flapped patch pocket on the chest with hook & loop closure.
- Signature 24-7 bellowed and flapped sunglass pocket with soft mesh lining and hook & loop closure.
- Two signature 24-7 bellowed and flapped large patch pockets in the front at waist level with hook & loop closures, plus inside hemmed pockets with a strap for securing equipment.
- Two hidden zipper side welt pockets.
- Flapped hydration chamber pocket on the back.
- Upper shoulder tabs with hook & loop closures for securing mic or hydration hose.
- Waist is adjustable with just one hand by using a hidden cord lock in the side pockets.
- Two signature 24-7 bellowed utility pockets on the back.
- An inside chest pocket with a pencil slot.
- A large inside pocket in the lower back area.

6.5 oz. 65/35 polyester cotton rip-stop, Teflon® coated, available in these colors:



For The Tru Professional

SIZES:
SMALL – 3XL



New! 24-7 Rip-Stop Shorts



READY WHEN YOU ARE.

Full Featured, Lightweight And Very Cool.

Like the 24-7 rip-stop pants that were designed for all-season wear, **TRU-SPEC®** has designed its 24-7 rip-stop Shorts with what **TRU-SPEC®** calls an "Engineered Dimensional Fit" which ensures an almost perfect fit both in the waist and the rise in all sizes. Like our full length 24-7 rip-stop pants, these poly cotton rip-stop shorts, are full featured, with active people in mind. They're a perfect choice for daily duty in a warm environment, on harbor or bike patrol, or a day on the links.



If you like the feel of real cotton fabric, our 100% cotton shorts are for you. They include all the special fit and function features as our poly cotton rip-stop shorts plus all the comfort of our original 100% cotton 24-7 pants. The 100% cotton canvas is also pretreated with a special garment wash to prevent shrinkage and color fading. For biking, hiking or working a patrol in the summer heat, these 9" shorts are long on around-the clock versatility and wearability.

FEATURES

- Comfort fit slider waistband construction which eliminates the need for gathered elastic or adjustable side tabs.
- Extra deep front pockets.
- Customized **TRU-SPEC®** original Prym Snap.
- YKK® brass zipper.
- Engineered dimensional fit.
- Pretreated garment wash to prevent shrinkage and color fading on 100% cotton canvas,
- Two (2) knife/accessory pockets with stiff fusing interlining.
- Two cargo pockets with hook & loop closures and bellowed side gussets.
- Two (2) internal magazine compartments in both cargo pockets.
- Cell phone/magazine pocket.



6.5 oz. 65/35 polyester cotton rip-stop, Teflon® coated, available in:



8.5 oz. 100% cotton canvas available in:



Sizes:

28" – 54" waist with 9" inseam



For The **Tru** Professional

New! 24-7 Long Sleeve Polo



READY WHEN YOU ARE.

It's Breathable. It Keeps You Dry. And It Has Long Sleeves.

You can still enjoy the comfort and neat good looks of a polo shirt even when there's a little nip in the air. Our new 24-7 Long Sleeve Polo adds full length sleeves to our original short sleeve polo. Other than the longer sleeves, the two polos are identical, including the use of two amazing fabrics:

- *The interior of the fabric is a unique 40% polyester single pique knit treated with TRU-DRI™ moisture wicking technology to pull moisture and perspiration from the body.*
- *The exterior of the fabric is a lightweight, tightly knit 60% combed cotton to ensure the same neat, wrinkle-free appearance and the same color fast qualities you would expect in a top-of-the-line commercial shirt.*



FEATURES

- *Strategically placed microphone/sunglass loop immediately below the placket.*
- *Dual pen slot pocket on the left sleeve.*
- *Curl free collar.*
- *Gusseted sleeves for greater range of motion.*
- *Side vent and long tail*
- *3-button placket.*
- *Tagless size labels.*
- *Reinforced half moon neck yoke and taped neck.*

Original 24-7 Short Sleeve Polo

Still a year-round favorite for both duty and off-duty wear. With eight colors to choose from, there's a short sleeve 24-7 polo to match virtually any departmental color scheme.



Long sleeve polos available in:



Sizes:
Small – 4XL



For The Tru Professional

Original short sleeve polos available in:



New! 24-7 100% Cotton Field Shirt



READY WHEN YOU ARE.

These All-Cotton, All Purpose Field Shirts Really Do It All, On Duty Or Off.



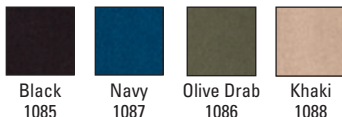
For anyone who favors the feel of pure cotton duty wear and whose active lifestyle demands maximum function and versatility in addition to comfort, this 100% cotton Field Shirt fills the bill to a "T".

Like all 24-7 Series apparel, our long sleeve Field Shirt is designed for serious work, regardless of the assignment, but with its good looks, it's stylish enough for after hours, as well. Matched with a pair of our original 24-7 cotton pants, the cotton Field Shirt provides a contemporary uniform that's as tough and hard nosed as any officer could want, and the signature 24-7 features ensure its suitability whether the assignment requires riding in a patrol car, manning a desk or responding to a call for assistance.

Never had a comfortable, cotton uniform shirt you could wear 24-7? You do, now.

**AVAILABLE
APRIL 2009**

**5.4 oz. 100% cotton, long sleeve,
available in:**



Sizes:
XSR - 4XLR
SL - 3XLL

FEATURES

- Bi-swing back.
- Gusseted sleeves, articulated at the elbows
- Two-button banded vent cuff with placket
- Button down front placket.
- Dress style shirt tail.
- Signature 24-7 bellowed upper chest pockets and flaps with hook & loop closure; left pocket has pen stall, right pocket has mic/sunglass stall.
- Hidden document pockets.
- Byron collar.



For The **Tru** Professional

The Intelligent Evolution Of The BDU.

TRU-SPEC®



TACTICAL RESPONSE UNIFORM

**The Perfect Business Suit...
For The Operator Who's All Business.**

What does today's smart tactical officer wear to work?

Every workday, more and more SWAT, SRT and other elite special response units are selecting the full featured TRU, **TRU-SPEC'S** highly acclaimed Tactical Response Uniform that was designed specifically for tactical units.

Although the TRU is loosely based on the current military ACU, it goes well beyond the US Army's mil-spec (Coat - FQ/PD 04-04A, Trouser - FQ/PD 04-05A). The TRU is fully GSA-compliant, and all TRU fabrics are manufactured in the U.S. in government approved factories.

The TRU also includes several exclusive product features even the military ACUs don't have including more durable construction and enhancements that ensure better fit, greater comfort, and built-in capabilities for carrying the special gear you must have when you're on the job.

In your line of work, there's only one TRU-ism you need to know when you select your wardrobe: **TRU...** It's the intelligent evolution of the BDU.

See pages 13-14 for features, sizes and colors.



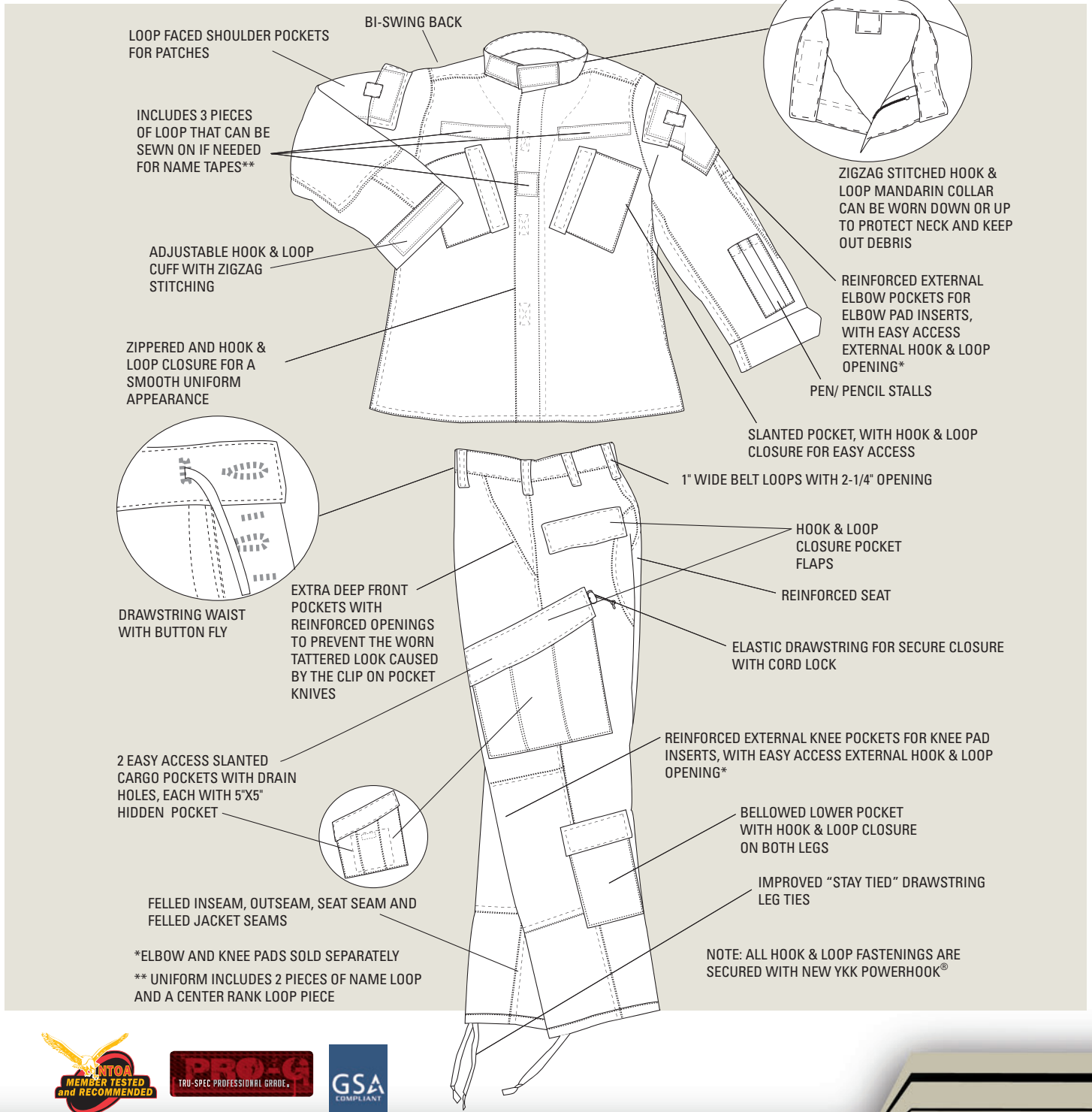
TRU Tactical Response Uniforms

TRU-SPEC®



The TRU has more special features for the tactical officer than any other uniform on the market, including:

TACTICAL RESPONSE UNIFORM



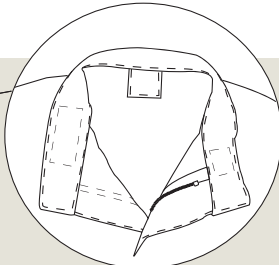
LOOP FACED SHOULDER POCKETS FOR PATCHES

BI-SWING BACK

INCLUDES 3 PIECES OF LOOP THAT CAN BE SEWN ON IF NEEDED FOR NAME TAPES**

ADJUSTABLE HOOK & LOOP CUFF WITH ZIGZAG STITCHING

ZIPPERED AND HOOK & LOOP CLOSURE FOR A SMOOTH UNIFORM APPEARANCE



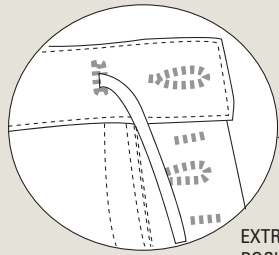
ZIGZAG STITCHED HOOK & LOOP MANDARIN COLLAR CAN BE WORN DOWN OR UP TO PROTECT NECK AND KEEP OUT DEBRIS

REINFORCED EXTERNAL ELBOW POCKETS FOR ELBOW PAD INSERTS, WITH EASY ACCESS EXTERNAL HOOK & LOOP OPENING*

PEN/ PENCIL STALLS

SLANTED POCKET, WITH HOOK & LOOP CLOSURE FOR EASY ACCESS

1" WIDE BELT LOOPS WITH 2-1/4" OPENING



DRAWSTRING WAIST WITH BUTTON FLY

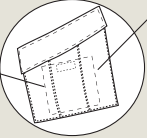
EXTRA DEEP FRONT POCKETS WITH REINFORCED OPENINGS TO PREVENT THE WORN TATTERED LOOK CAUSED BY THE CLIP ON POCKET KNIVES

HOOK & LOOP CLOSURE POCKET FLAPS

REINFORCED SEAT

ELASTIC DRAWSTRING FOR SECURE CLOSURE WITH CORD LOCK

2 EASY ACCESS SLANTED CARGO POCKETS WITH DRAIN HOLES, EACH WITH 5"X5" HIDDEN POCKET



REINFORCED EXTERNAL KNEE POCKETS FOR KNEE PAD INSERTS, WITH EASY ACCESS EXTERNAL HOOK & LOOP OPENING*

BELLOUED LOWER POCKET WITH HOOK & LOOP CLOSURE ON BOTH LEGS

FELLED INSEAM, OUTSEAM, SEAT SEAM AND FELLED JACKET SEAMS

IMPROVED "STAY TIED" DRAWSTRING LEG TIES

*ELBOW AND KNEE PADS SOLD SEPARATELY
** UNIFORM INCLUDES 2 PIECES OF NAME LOOP AND A CENTER RANK LOOP PIECE

NOTE: ALL HOOK & LOOP FASTENINGS ARE SECURED WITH NEW YKK POWERHOOK®



TRU Tactical Response Uniforms



TACTICAL RESPONSE UNIFORM

TACTICAL RESPONSE UNIFORM SHIRT:

50/50 CORDURA® NYLON COTTON RIP-STOP*

<u>ITEM NO.</u>	<u>COLOR</u>
1265	MULTICAM®
1274	WOODLAND
1272	DESERT 3-COLOR

65/35 POLYESTER COTTON RIP-STOP

<u>ITEM NO.</u>	<u>COLOR</u>
1298	MULTICAM®
1267	WOODLAND DIGITAL
1292	DESERT DIGITAL
1294	URBAN DIGITAL
1269	COYOTE
1288	BLACK
1286	KHAKI
1284	OLIVE DRAB
1282	NAVY

TACTICAL RESPONSE UNIFORM PANT:

50/50 CORDURA® NYLON COTTON RIP-STOP*

<u>ITEM NO.</u>	<u>COLOR</u>
1266	MULTICAM®
1275	WOODLAND
1273	DESERT 3-COLOR

65/35 POLYESTER COTTON RIP-STOP

<u>ITEM NO.</u>	<u>COLOR</u>
1299	MULTICAM®
1268	WOODLAND DIGITAL
1293	DESERT DIGITAL
1295	URBAN DIGITAL
1271	COYOTE
1289	BLACK
1287	KHAKI
1285	OLIVE DRAB
1283	NAVY

SIZES AVAILABLE (Shirts and Pants):

XS - 5XL Regular, S - 3XL Long, XS - XL Short

*Nylon 66: High tenacity nylon fiber. No Melt, No Drip thermal preferences with superior moisture management and quick drying ability. Higher durability, abrasion and comparable busting strength.



1265



1266



For discriminating users, the TRU is available in our highest quality 50/50 CORDURA® nylon cotton rip-stop* in these colors:



MultiCam®



Woodland



3-Color Desert

The TRU is also available in high value, affordably priced 65/35 polyester cotton rip-stop in these colors:



MultiCam®



Black



Khaki



Olive Drab



Coyote



Navy



Woodland Digital



Desert Digital



Urban Digital

New! Tactical Response Combat Shirt

No Melt. No Drip*. No Sweat.

It's the uniform shirt you'll buy for comfort but wear for safety. Our new Tactical Response Combat Shirt is based on a current military design that helps reduce the severity of burn injuries while providing a more comfortable uniform top to wear under hot, heavy body armor and protective vests. However, **TRU-SPEC®** has gone one step farther by making this comfort and safety affordable for small agencies and departments and even for individual police, security and military personnel!



The big news is that the body of our Tactical Response Combat Shirt is made from no drip, no melt Cordura® Brand Baselayer, a 60/40 cotton nylon miracle blend that not only reduces the severity of burn injuries, but also breathes, wicks away moisture and dries quickly. Cordura® Brand Baselayer might look and feel like lightweight t-shirt material, but it's tough as nails and very protective against low level heat. The full function uniform style sleeves, based on our extremely popular TRU uniform, are available in two high performance fabric options. Both are tough, durable and field tested to ensure dependable service under the most challenging conditions.



For The **Tru** Professional

50/50 Nycro rip-stop sleeves with 60/40 cotton nylon Cordura® brand Baselayer body available in:



Army Digital/
Foliage
2551

MultiCam®/
Sand
2550

65/35 Polyester cotton rip-stop sleeves with 60/40 cotton nylon Cordura® Brand Baselayer body available in:



Black/
Black
2552

Khaki/
Sand
2554

Olive Drab/
Olive Drab
2553

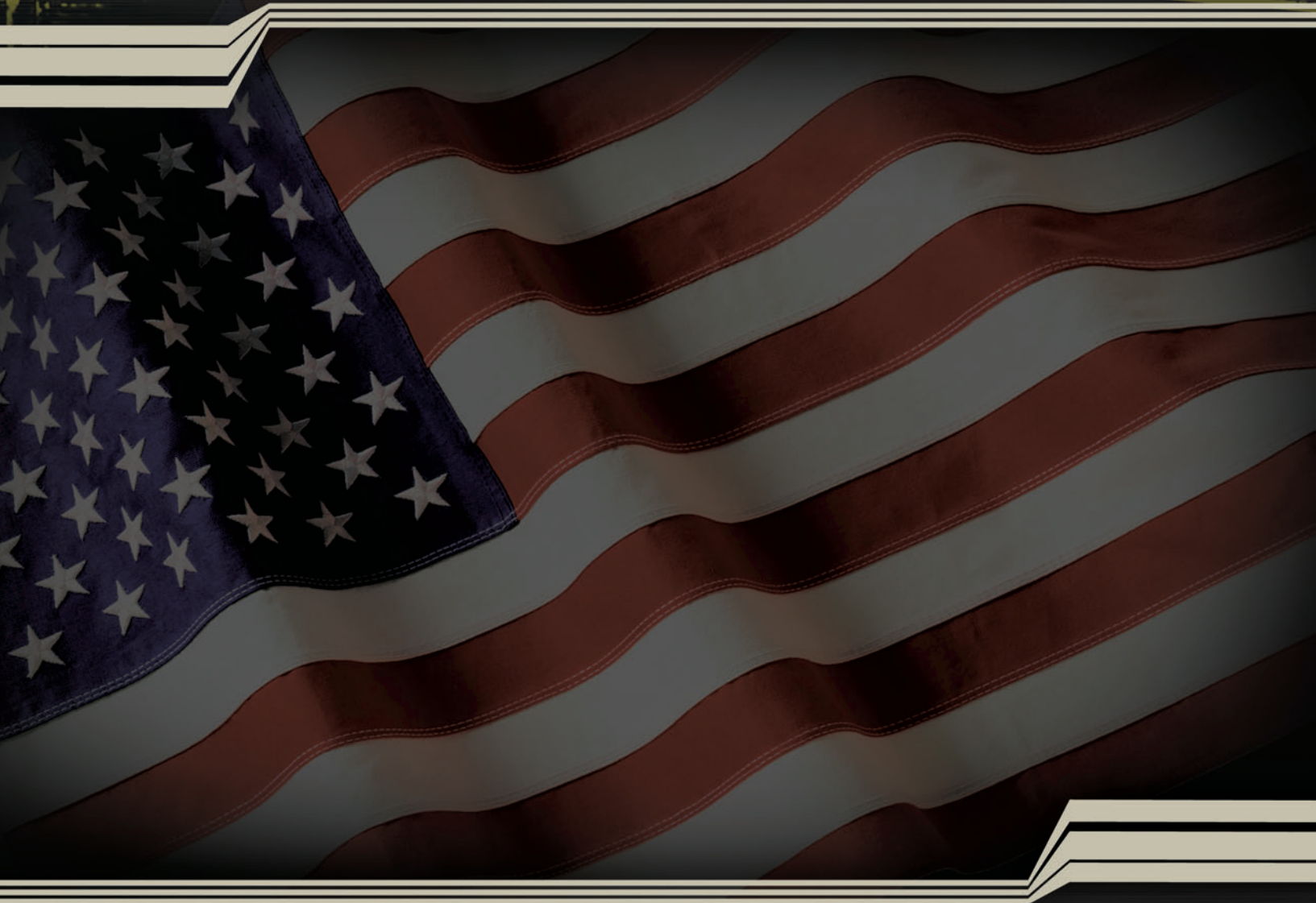
FEATURES

- Mock turtle neck.
- Zippered sleeve storage pockets.
- Anti-abrasion padded elbow patch.
- Gusseted sleeves.
- Hook & loop cuff closures.
- Loop on sleeve pockets for attaching name, rank and flag.
- Glint tape holder for IR tape.
- No shoulder seams to minimize rubbing and chafing.

Sizes:
Small – 2XL

**No Melt, No Drip technology applies to complete ACU and MultiCam® patterned shirts only. Technology is only applicable to the base layer body and not the sleeves of all other colors and patterns.*

TRU-SPEC® products are available only through approved **TRU-SPEC®** dealers and distributors. Merchandise may not be purchased directly through **TRU-SPEC®**. For a list of approved **TRU-SPEC®** resellers, visit our website: www.truspec.com



For The **Tru** Professional

ATLANCO dba TRU-SPEC®

www.truspec.com

1125 Hayes Industrial Dr.

Marietta, GA 30062

Ph: 770.427.1334

Toll free: 1.800.241.9414

Fx: 770.427.9011